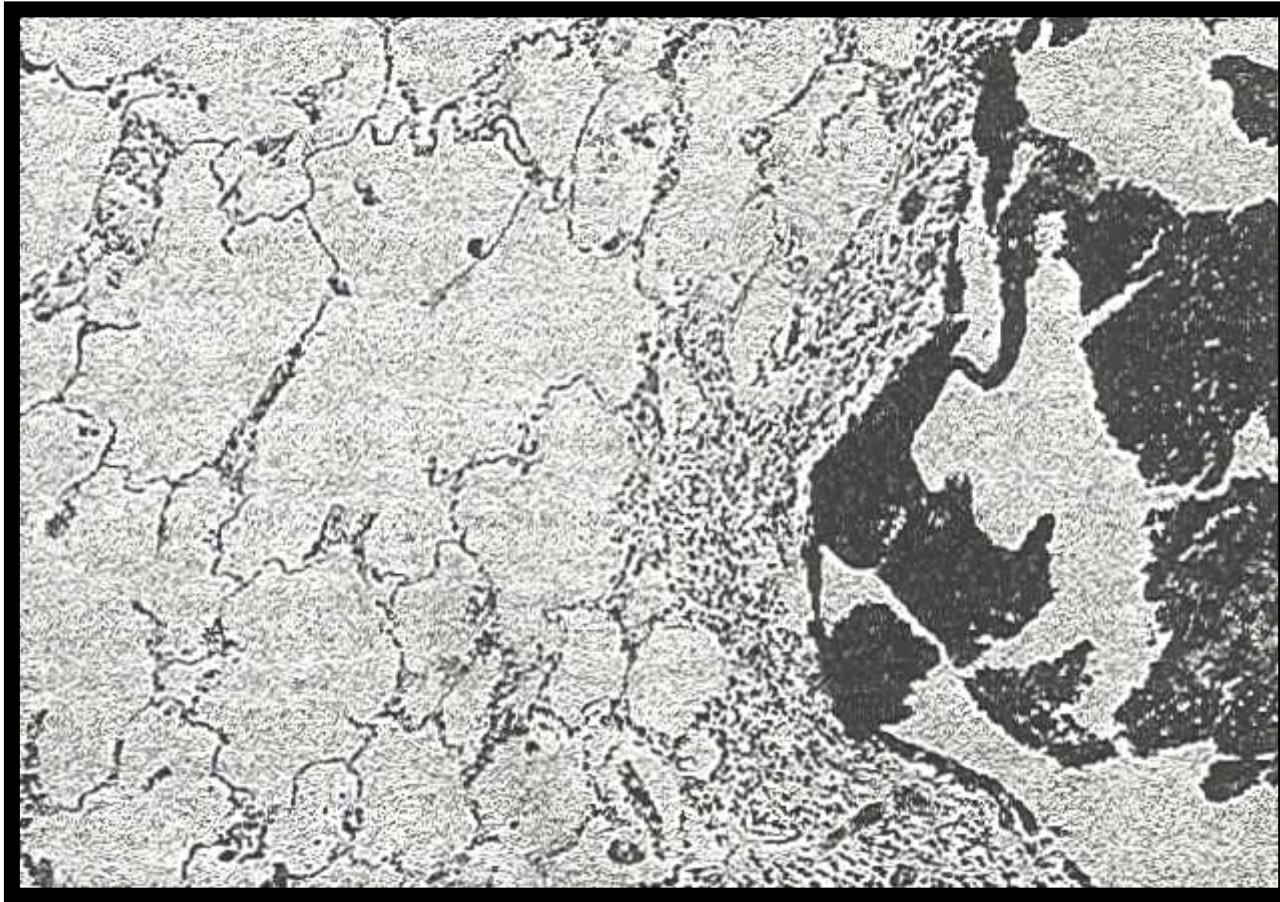
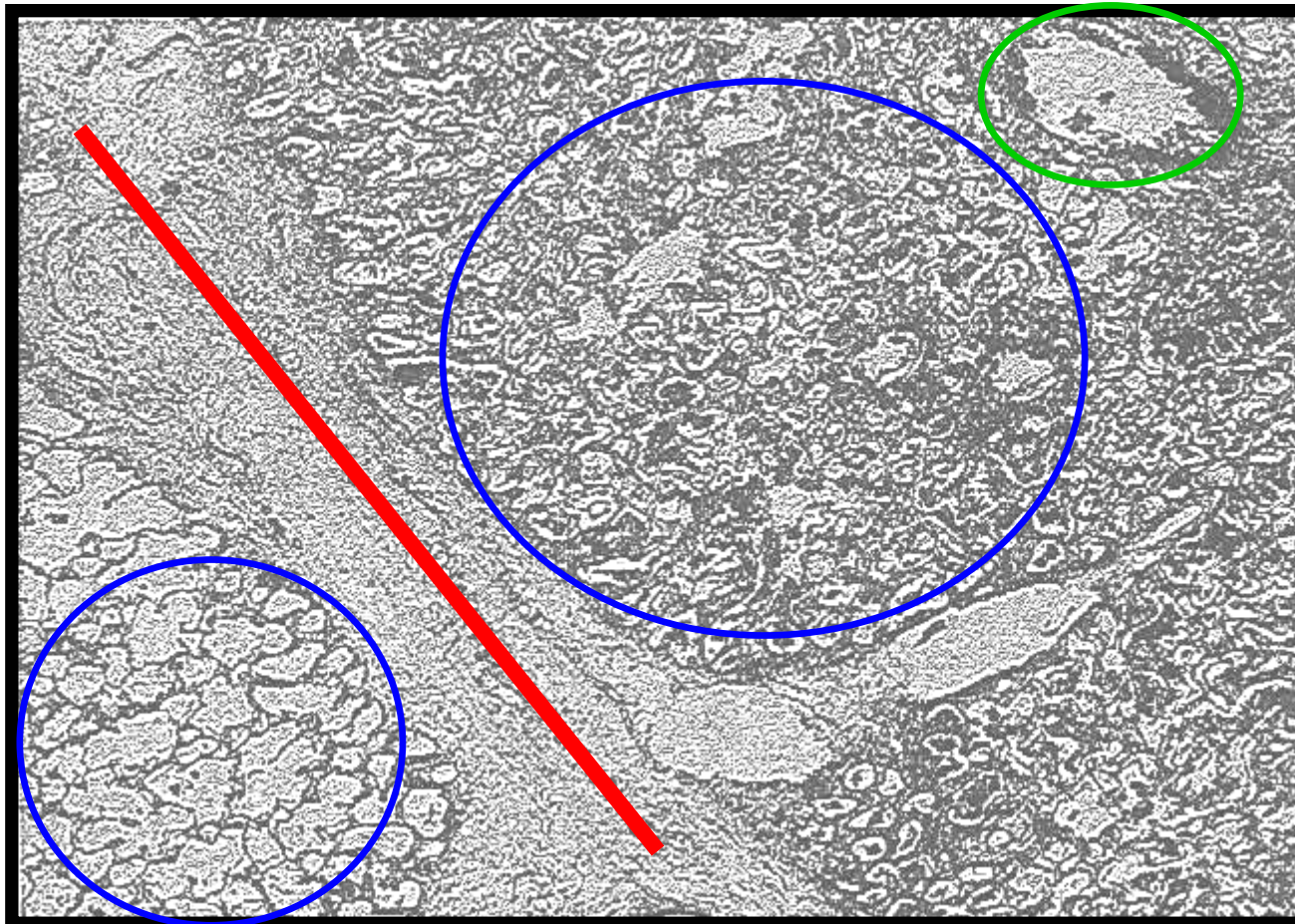


3 Year Old Cystic Fibrosis Patient

16 Day Course of Oxygen



3 Year Old Cystic Fibrosis Patient 16 Day Course of Oxygen



General Conclusions from the Literature

- **There is some threshold partial pressure for oxygen toxicity**
- **The rate of onset of toxicity is proportional to the oxygen partial pressure and the duration of exposure**
- **Exposure of healthy individuals to normobaric hyperoxia can result in toxicity**

Recommended Clinical Use of Supplemental Oxygen

- **50% Oxygen**
 - Can be used for an unlimited period of time
- **100% Oxygen**
 - Limit to 12 to 24 hours
- **60% Oxygen**
 - Exposure for more than 48 hours is considered a toxic exposure
- **General Recommendation (Best Practice)**
 - Monitor blood gases and maintain SaO₂ between 80 to 100%